

SOGETSU IKEBANA QUEENSLAND INC.

www.ikebanabrisbane.org.au

Facebook: ikebanabrisbane

instagram: sogetsu.ikebana.qld.inc

Newsletter

December 2023

Editor Amanda Terblanche



SOGETSU IKEBANA QUEENSLAND INC.

**Our Journey
past present future**

Celebrating 60 years of Ikebana in Queensland

Director's Message

Wendy Hoskin

From time-to-time local Sogetsu members visit Japan to attend Sogetsu Ikebana classes at Headquarters Tokyo. Recently Vernisher Wooh, Belinda Lee Snow, Pat Mackie, Gillian Jones and, for the first time, I too had this most wonderful opportunity.

A highlight, and there were many, was meeting Iemoto Akane at the Takashimaya Exhibition. The theme of the exhibition was *What's Sogetsu?* Certain arrangements exhibited were perhaps pushing the boundaries; many arrangements were clever and creative.

The international ikebana classes were presented in English by senior teachers. See in this Newsletter "Learning ikebana in Japan".

All year in Queensland we celebrated the 60th year of Sogetsu Ikebana Queensland Inc. During my research for various events, I was thankful to the eager group of ikebana members who had taken the time to pen *Under the Grass Moon*. If you can borrow a copy, do so as it is a treasure of information tracing the beginning of our association. It also reflects the edginess that I believe was inherent in the ikebana produced by the members of Sogetsu Ikebana Queensland Inc. back in the day, and today this edginess is still prevalent.



Gillian Jones, Wendy Hoskin and Pat Mackie in Japan at the Takashimaya Exhibition, titled *What's Sogetsu?*

One of the highlights of our celebrations was the *Sogetsu Ikebana Past, Present, Future Event* held in March 2023. This event was enthusiastically supported by members past and present. How inspiring and lovely to see current members work alongside past members, students and supporters in creating ikebana. Having a *Past, Present, Future Event* that was not a formal exhibition, but one of friendship, creation and social interaction was appreciated by all.

In August 2023 we had the key 60th Celebration event held at the Gallery of Modern Art in Brisbane. This played out in four parts:

Mr Tarun Nagesh, the Curatorial Manager of Asia and Pacific Art organised for the sculpture by Sofu Teshigahara, *Eternity*, to be on public display from 23 to 30 August alongside the weekly arrangement created by our member Robyn Cuming.

Pat Mackie (Riji) and Venisher Wooh (Riji) presented ikebana works in the GOMA foyer and cinema.

One hundred and twenty Sogetsu Ikebana enthusiasts attended the live streaming from Japan in GOMA Cinema A, which was presented by Master Sozan Nakamura at Japan HQ. This was followed by a celebration party at GOMA Bistro where talented Mikiko Inoue welcomed us playing koto music. Patron John Massy awarded Life Membership to Pat Mackie.

Our Annual Sogetsu Ikebana Exhibition at Mt Coot-tha once again showcased the skills of members. The organisation that goes into this event is considerable; thank you Sue Poole for your leadership of the exhibition.

In October 2023 Lily Karmatz presented a Land Art Workshop. After morning tea Lily introduced concepts of Land Art. It is a passion of hers and turned out a most enjoyable workshop. The comradery of such a relaxed workshop was inspiring. See Nicole's article in this Newsletter.

In November 2023 our association offered another workshop to members. This time the focus was Japanese culture. Ikuko Okada taught members more about calligraphy and members observed Tomomi Tanowaki demonstrating a Japanese sumie painting. Ikuko and Tomomi generously shared their impressive skills and time. Helen Cook has penned an article in this Newsletter.



Sue Poole and Peggy Perkins
at Sogetsu Ikebana Exhibition
at Mt Coot-tha

Members gathered on 6 December 2023 for a Sogetsu End of Year (Bonon Kai) lunch at IPPIN Japanese dining and a celebration of friendship through flowers. Thank you to Ann Downey for organising this enjoyable event.

A special thank you to our long-term Patron, John Massy for his continued support of our ikebana society.

I wish to thank the committee that steered our association so remarkably well, Sallyanne Scott, Ann Downey and Christina Chen as Committee Executive; and Committee Members Akemi Dunne, Riana Holliday, Ingrid Kivikoski, Chieko Klerkx, Ikuko Okada, Karin Power and Masako Morrison. We also have 3 non-committee portfolios and thank Robyn Cuming, Nicole Dorner-Scales and Amanda Terblanche.

Our Editor Amanda Terblanche is currently travelling overseas. She has done a lovely job of nominating journalists, gathering articles, editing photos, liaising with Ann Downey and ensuring I have the Director's Message written! Thanks Nicole Dorner-Scales for your work behind the scenes to ensure Sogetsu Ikebana Queensland Inc. has a digital presence. Robyn Cuming organises, without fail, the roster to ensure an ikebana arrangement is displayed in QAG - every week.

My thanks to two key members of our committee, Ann Downey and Christina Chen. The roles of secretary and treasurer are not only pivotal, but also a requirement under the Incorporations Act. Ann is stepping down from her role as secretary. She has undertaken this role for four years with skill and grace. In March 2024 a few other long-term serving members will also step down and all members are invited to give some thought to joining and serving on the committee. We have five meetings a year. These meetings are relaxed and end with a light lunch and many conversations.

After celebrating 60 years of ikebana in Qld in 2023, we are inspired to keep discovering and exploring the art of Sogetsu Ikebana in the New Year. Please make the time to centre yourselves through ikebana as the silly season descends. Thanks for your friendship throughout the year. Enjoy the Festive Season with family and friends.

宜しく願い致します

Regards, Wendy

Sogetsu Ikebana Queensland Inc. - Life Membership of Pat Mackie

"Honouring Pat's inspiring and dedicated contribution to the art of Sogetsu Ikebana".

It seems fitting that this award be presented to Pat during Sogetsu Ikebana Queensland's 60th Anniversary in 2023, celebrating 60 years of Ikebana in Queensland. Mr John Massy, Patron, presented the Life Membership Award to Pat at GOMA Bistro on Thursday, 24 August 2023, following an online



Festive Season arrangement by Ann Downey



John Massy presented the Life Membership Award to Pat Mackie

demonstration in QAGOMA Theatre, from a Master Instructor from Sogetsu Headquarters in Tokyo. Pat is the third recipient of this Award.

Pat's ikebana journey commenced in 1990 when she started taking lessons with Mary Jane Ramsden at Mary Jane's home in Sunnybank. As she continued with her lessons, Mary Jane could see that Pat had that "special something" and encouraged her to study and apply for her Sogetsu ikebana Teacher's Certificate. Pat obtained her Fourth Grade Teacher's Certificate in 1998 and has continued learning and teaching to this day.

What a journey this has been! In March 2018, Pat was presented with her Teacher's Diploma 1st Grade Riji by the Iemoto Akane Teshigahara at the "Flower Thanks Day", in Tokyo. There are eight grades of Teacher's Diploma of which Riji is the highest level awarded by Sogetsu Headquarters in Tokyo.

Over the years Pat has travelled to Japan and particularly Tokyo, on a frequent basis using every occasion to improve her skills and knowledge of ikebana. She takes every opportunity to enthusiastically impart this knowledge to her many students, and others. She is always willing to promote Sogetsu Ikebana in any way she can, e.g., through demonstrations, displays, radio and newspaper interviews or in one to one discussions. Her motto is "never pass up an opportunity to put Sogetsu Ikebana forward to the public".

Pat was a Sogetsu Ikebana Management Committee member for many years, stepping up to the role of Director in 2002/2004. Whilst Director, she was involved in compiling the publication "Under the Grass Moon" celebrating the 40th Anniversary of the Sogetsu School of Ikebana, Queensland 1963-2003, and which contained wonderful stories and photographs of members over that period.

For over five years Pat was the Sogetsu Ikebana Exhibition Chairperson overseeing and co-ordinating the running of the annual two-day weekend exhibition, the most important event on the Sogetsu Ikebana Queensland calendar. The positive feedback received after these exhibitions was in no small part due to Pat's professional and creative input.

Pat Mackie is a highly deserving recipient of the Life Membership honour.

- Written by Catherine Purdon

Land Art Workshop

And the year of celebration continued... On this occasion members could experience a hands-on Land Art Workshop presented by Lily Karmatz. Lily is a visual artist and ikebana teacher practising her art in Brisbane.

First she explained what Land Art was all about and what we could expect from this workshop. Outdoors! That's where we ventured then - into a bushy area in



Kenmore. We observed our immediate environment in nature as inspiration to select a spot to create our own Land Art. We analysed the natural materials around us to see how we could incorporate them creatively into our installations. Some of us had brought additional dry and/or fresh natural material with us to incorporate in our installations, all guided by the standard principles of ikebana.

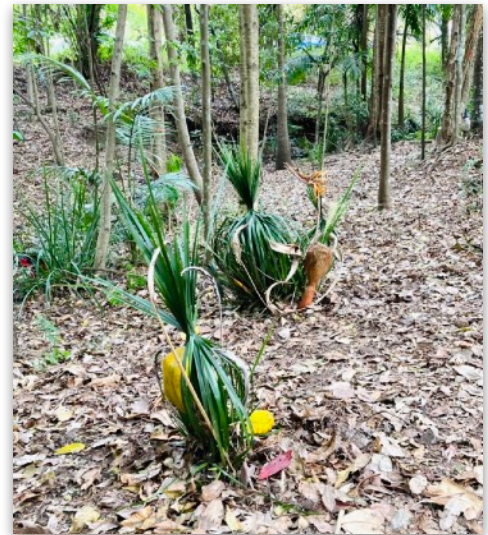
We finished the workshop with a tour of all the artwork created and listened to each artist's inspiration. **Just like a normal workshop, only it was beyond Ikebana!**

By “beyond Ikebana” I meant that I experienced it as ‘4-dimensional’, if there is such a thing, as it not only incorporated our 3-dimensional installation, and the landscape around us, but in this case, also birds singing in the background and rain drizzling onto us through the leafy ceiling of the tall trees, stimulating all senses.

What actually is Land Art? I wondered in the weeks before the Land Art Workshop, searching online and paging through books on the subject. In summary Land Art can be defined as earth art which is created directly in the landscape. The land itself can be sculpted into earthworks. Or it could be formed by making structures in the landscape using natural materials such as rocks, twigs, soil, any other part of vegetation and water found on the site.

This hands-on workshop led to an experience of ikebana expressed as Land Art. Our thanks go to Lily Karmatz for facilitating this inspirational workshop.

- **Written by Nicole Dorner-Scales**



Land art created by Akemi Dunne



Lily Karmatz demonstrating Land Art

QAGOMA Foundation Dinner: Sogetsu ikebana table arrangements

Sogetsu Ikebana Queensland was honoured to be again asked to do the table arrangements for the QAGOMA Foundation Dinner. We have been part of this special event for some years now. This extends our partnership with QAGOMA and, I think, shows how much our weekly arrangements at the Gallery are appreciated and valued.



The date was Saturday 21 October 2023, and many of our members, including Rijis Pat Mackie and Vernisher Wooh were in Tokyo, so it was up to their students to deliver.

I was joined on the team by Nicole Dorner-Scales, Eri Pitt and Masako Morrison, and it was a joy to work with such professionals – calm, experienced, organised, and fun!

The brief was challenging – *reflect the modern pink and mauve artworks on one wall of the Water Mall, but also incorporate the colours of the works by First Nations artists on another wall.*

We settled on white ribbed bowls, peach sticks, Leucadendron Jester and Nandina that I had to forage as it wasn't available at the flower markets.

Thanks to Pat Mackie for letting us use her studio (unsupervised) for the initial preparation. We then transported everything to QAGOMA and finished off the arrangements with time to spare.

There is so much involved in a job like this: meetings with QAGOMA staff to get the brief; selecting containers and materials that fit within the budget; providing suggested arrangements – both sketches and real; waiting for approval of an arrangement; ordering containers and plant material; collecting containers and plant material; and the list goes on, before the day actually arrives and you prepare the arrangements and place them on the 15 beautifully set tables in the Water Mall, with glasses and cutlery sparkling in the light of the setting sun.

If you ever get the chance to be involved in one of these events, grab it with both hands. You will learn so much and have a very enjoyable, satisfying experience.

- Written by Ann Downey



Eri Pitt, Masako Morrison and
Nicole Dorner-Scales



Ann Downey

Shodo (Japanese Calligraphy) and Sumie (Ink Painting) Workshop

In November 2023 Sogetsu ikebana members gathered at St Luke's Hall in Tarragindi. Ikuko Okada and Tomomi Tanowaki again showed their depth of knowledge and experience as they led our second enjoyable and interesting workshop on Japanese Calligraphy and Ink Painting (sumie).

We learnt how to use the calligraphy brush and practised simple words with guided instructions provided.

Ikuko explained and demonstrated examples of the various styles of calligraphy – block, cursive, semi-cursive and abstract, with the abstract style being the most creative. To celebrate 2024 as the year of the dragon, Ikuko painted a large dragon flying in kanji.

We learnt about the decisions parents make in naming their children, choosing the appropriate connotation (of up to 30 versions) of the baby's name to write in kanji.

Tomomi worked on a magnificent ink painting of a tiger, demonstrating her excellent brush technique to obtain various visual effects and enhance the tiger's features. She then introduced colour washes to emphasise the tiger's stripes along his backbone, creating a striking effect. She hopes to enter this drawing in an annual ink painting exhibition in Japan next year.

Ikuko assisted each of us to write the kanji for a name or common word we had chosen. Tomomi placed our name and a stamp on our creation, giving us all a memento to take home.

Ikuko and Tomomi were both very generous with the care and attention they gave each of us to produce our masterpiece.

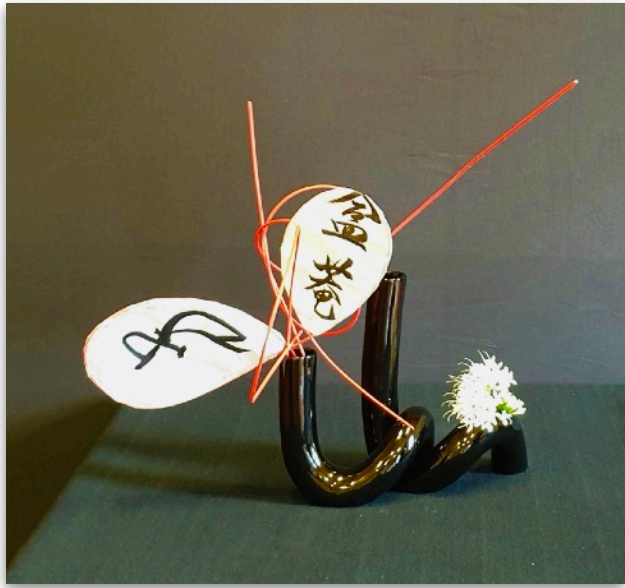


Tomomi Tanowaki & Ikuko Okada



Ikuko Okada

Attendees incorporated their individual word written in calligraphy in a beautiful ikebana arrangement.



Arrangement by Ann Downey



Arrangement by Maria McRae



Arrangement by Masako Morrison



Arrangement by Wendy Hoskin

I am sure all attendees appreciated the efforts and willingness of Ikuko and Tomomi to share their years of training and practice. Our thanks also to our Secretary, Ann Downey for coordinating the event.

- **Written by Helen Cook**

Love of ikebana ... and the journey of continuous learning ... congratulations



Certificate 1 Yonkyu:
Catherine Maree Van Extel and
teacher Michelle Wong



Certificate 3 Nikyu: Akemi Dunne and
teacher Pat Mackie

Learning Ikebana in Japan at Sogetsu Headquarters in Tokyo

During this year Vernisher Wooh, Pat Mackie, Gillian Jones, Wendy Hoskin and Belinda Lee Snow attended ikebana classes in Japan HQ.

Vernisher Wooh

During my visit in Japan I had the wonderful and stimulating opportunity to take Kawana Sensei's classes about mass in an arrangement. We focussed on mass, in terms of density, power and energy.

I also enjoyed Hinata Sensei's classes about Reconsideration of Lines. During the coming year, we could explore more about what I learned.



Vernisher Wooh: Reconsideration
of Lines in an arrangement

Pat Mackie

An ikebana trip to Tokyo would not be complete without a visit to “Umeno” pottery shop. It offers many hours of creativity and joy even if our bank balance takes months to recover.

Editor:

Pat attended various classes in Tokyo, and on her return to Brisbane several amazing mass and line arrangements welcomed our class in her studio.

Pat cautioned that driving will become a new challenge as one drives looking at plants - as all ikebana people do - to find new possibilities to use as mass in an arrangement.



Umeno pottery shop



Arrangement by Pat Mackie

Wendy Hoskin

During 10 days in Japan I attended 5 ikebana lessons, 2 Sogetsu Ikebana Exhibitions, met Iemoto Akane Teshigahara, the head of the Sogetsu School, visited two Shinto shrines and a Buddhist shrine. I discovered a four-hundred-year-old Japanese garden 500 m from my hotel. I ate Japanese, Mexican, Italian, French and Brazilian food. I walked 115,491 steps, 77.6 kilometres, travelled the Ginza line many times and caught a subway train from a platform 45 m underground. I bought 5 new containers, and it took 22 hours to transit back to Queensland.

From the international ikebana classes presented in English, I selected a freestyle class and a class that used an artwork for inspiration. In a specialist workshop we worked with polystyrene from a pressurised can. I created an ikebana work with unconventional materials and aspidistra leaves. Another workshop titled *Adventures in Sogetsu* focussed on unconventional materials. And finally, I attended a class focussing on line, one of the three attributes of Sogetsu Ikebana.

The last international class that Pat, Gillian and I had to prepare for, had the theme *To An Artwork*. This class would be presented by Sensei Fukushima. I still needed an idea or artwork...

Sunday was our tourist day. We visited Ueno in pursuit of some food stalls and to purchase additional luggage for Pat and Gillian, fortunately my bag just kept expanding! After the most amazing French toast I have ever had, we were back on the Ginza line to Roppongi to visit the National Gallery. This is where I found my artwork, a flyer for an exhibition that had taken place at the gallery. This flyer inspired the arrangement I produced and was very proud of. Sensei commented that the artwork was placed very well and has become part of the arrangement. She also praised the use of the purple flower adding strength to the arrangement. I was sooo happy...!

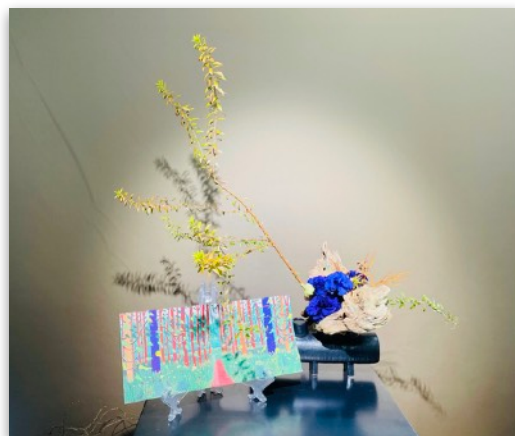
Gillian Jones

This is an arrangement done in Tokyo. *To Complement an Art Piece* was the theme. They had art pieces we could choose from. I happened to have some packaging in my bag that was around wine bottles I bought from the airport in Tokyo. I was lucky and everything fell into place. I found a container which had two containers joined in the middle by a middle section so I was able to slide the packaging around the left cylinder. I was very happy with the outcome. The remark I got from Sensei was "marvelous"...

Belinda Lee Snow

Japan Sogetsu ikebana class: I shared a very busy morning with 15 students from Mexico. There was also an Australian group and a Polish group. It was fantastic. The Mexican students were leaving Japan that day and gifted me the flowers. When I returned to my hotel that night, I made an arrangement on the 4th floor, when I woke up it had been moved to the entrance of the hotel as a welcome. How fantastic. They called me the artist in residence.

When I announced to my teacher that I would attempt *Mass and Line*, she suggested a leafier branch, but it was too late. Sensei explained that mass is like an Onigiri rice ball. No visible light should come through the centre. This was interesting.



Arrangement by Wendy Hoskin



Arrangement by Gillian Jones



Arrangement by
Belinda Lee Snow

Sogetsu End of Year 2023 Bonen Kai lunch

IPPIN Japanese dining was an excellent choice and Ann Downey organised this event extremely efficiently. All we could do was to enjoy and socialise. It truly was fine Japanese dining and a celebration of friendship through flowers. We celebrated 60 years of ikebana in Queensland one more time, looking back, also enjoying the present moment, and with enthusiasm in our hearts for the future of ikebana in Queensland.



What's coming next

AGM Wednesday 20 March 2024 at 10.30am at Queensland Art Gallery Lecture Theatre



SOGETSU IKEBANA QUEENSLAND INC.

**Our Journey
past present future**

Celebrating 60 years of Ikebana in Queensland

Editor

Members, thank you for each contribution and the lovely photos in this Newsletter. Particularly I want to applaud our Secretary Ann Downey for her unwavering input and guidance to our Society, and every Newsletter. To enjoy more photos go to [instagram:sogetsu.ikebana.qld.inc](https://www.instagram.com/sogetsu.ikebana.qld.inc) and [Facebook:ikebanabrisbane](https://www.facebook.com/ikebanabrisbane)