

SOGETSU IKEBANA QUEENSLAND INC.

www.ikebanabrisbane.org.au

Facebook: ikebanabrisbane

instagram: sogetsu.ikebana.qld.inc

Newsletter

September 2022

Editor Amanda Terblanche

Director's Message

Chris Wyer

Our Annual Exhibition 2022, themed 'Gift of Nature' gave us yet another opportunity to demonstrate our Sogetsu skills to the public. About 520 people attended on Saturday and Sunday together. Having more space was a most positive element in this year's exhibition - a considered decision which enhanced the ikebana arrangements and the auditorium.

Ross McKinnon AM (former curator of the Mt Coot-tha Botanic Gardens) opened our exhibition and we were delighted. In 2019 Ross was awarded The Order of the Rising Sun, Gold Rays with Rosette for recognition towards introducing Japanese cultures and promoting the understanding of Japan in Australia. He shared his love of Australian natives and was pleasantly surprised that our arrangements included many different varieties of Australian wildflowers.

Ross McKinnon AM



Heartfelt thanks and congratulations must go to each one of the Exhibition Committee for their thoughtfulness and leadership in presenting this exhibition, together with our member exhibitors and volunteers. Our patron, John Massy, has congratulated our members for a job extremely well done. We too felt that it was a very successful exhibition once again.

Photos of our exhibition are now on our website ikebanabrisbane.org.au, Instagram and Facebook should you wish to take a casual scroll-through.

Exhibition Team Chris, Chieko, Wendy, Ikuko, Riana and Catherine

On reading *Under the Grass Moon* recently, I came across a paragraph which I thought was relevant to everyone practising Sogetsu ikebana, particularly when we wonder what to do for exhibition pieces. A former Director of the Brisbane/Gold Coast branch (1986) **Nora Dyer, who was a very active teacher once asked Norman Sparnon, “What am I teaching?”. His reply was “Discipline. Unless the students are prepared to study, to learn, and to apply themselves to the discipline of the basic rules as set out by Sogetsu Headquarters (Tokyo, Japan) they will never progress to the freedom of free style, inherent in these rules.”** (*Under the Grass Moon* p. 85)

It is with great sadness that we have heard of the passing of Mavis Beer (Townsville). Mavis provided a significant contribution to Sogetsu Ikebana teaching in North Queensland. Please read her VALE following.

Our new placement for the installation of arrangements at HOTA Central (Home of the Arts, Gold Coast) is in a very public spot. It is also very accessible allowing easy installation of our arrangements. I have just completed the first display in this position.

To Ray Bywaters (Adelaide Branch), our warmest congratulations on being awarded the next Norman and Mary Sparnon Endowment Scholarship to study ikebana for 3 months in Japan in 2023.

Warm Regards

Chris



Chris Wyer's arrangement at HOTA

Ikebana at Ferny Grove Garden Club *written by Ann Downey*

In late July, Gillian Jones and I made our debut as Ikebana demonstrators. It was a soft launch in front of about 20 members of the Ferny Grove Garden Club. I talked about some of the theory of Ikebana and demonstrated a couple of basic styles – Basic Upright Moribana and Basic Slanting Style Nageire. Gillian did some freestyle arrangements showing that you can use any material in Ikebana – what you

pick up on the roadside, fresh leaves and flowers from the garden, painted gum leaves. **The audience appreciated the different styles and asked lots of questions.** They seemed to enjoy the demonstration as much as we did, and we were rewarded with a donation to the Association and a delicious morning tea.



Ann Downey



Gillian Jones

Ikebana at John Oxley Orchid Society Annual Show *written by Julie Lumsdale*

Fay Stutt and Julie Lumsdale nominated to do Sogetsu Ikebana arrangements for the John Oxley Orchid Society Show at Mt Coot-tha Botanic Gardens. Some Orchid Society members produced arrangements with their orchids as part of the Show judging. One of these members was the Dad of Alexander Evans, a Sogetsu Ikebana member in NSW.



Fay Stutt

He was very appreciative of our attendance and Ikebana arrangements.

High praise was conveyed to Fay by the organiser and Secretary Sonia Addison; Fay used long sprays of stunning orchids in her arrangements. A number of members came to speak to us and thank us for our Ikebana work.



Julie Lumsdale

Ikebana for Urban Art Projects Company (UAP) *written by Ann Downey*

Sogetsu Ikebana Queensland Inc was thrilled to be commissioned by UAP to prepare table arrangements for a special dinner celebrating the Chiharu Shiota exhibition at QAGOMA.

Chris Wyer and Sue Poole received a clear brief, Sue presented a concept plan, and then a small team led by Sue and mentored by Pat Mackie, swung into action.

There was cane to be ordered and painted the “just right” red; the small black vases we wanted to use were still on the high seas but arrived in plenty of time; flowers to be ordered - Cyclamens were our chosen flower and Sue stress tested their durability over a few weeks – one flower was carried around in a small plastic bag for days; it even visited QAGOMA to test its colour against Chiharu Shiota’s installations.

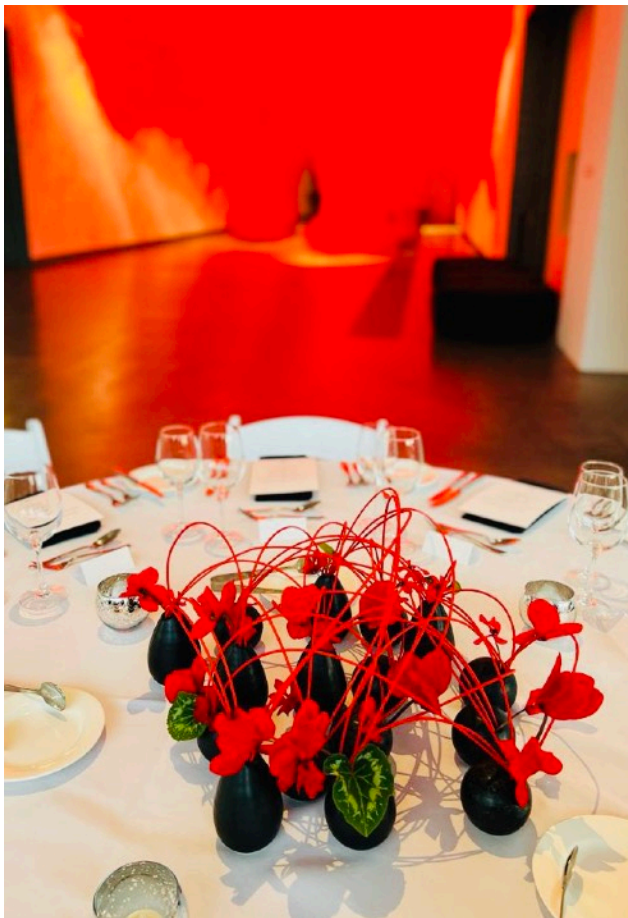
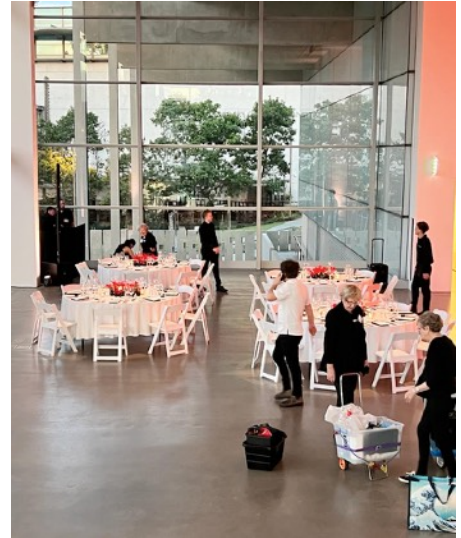


“Just right red” arrangement by Pat Mackie

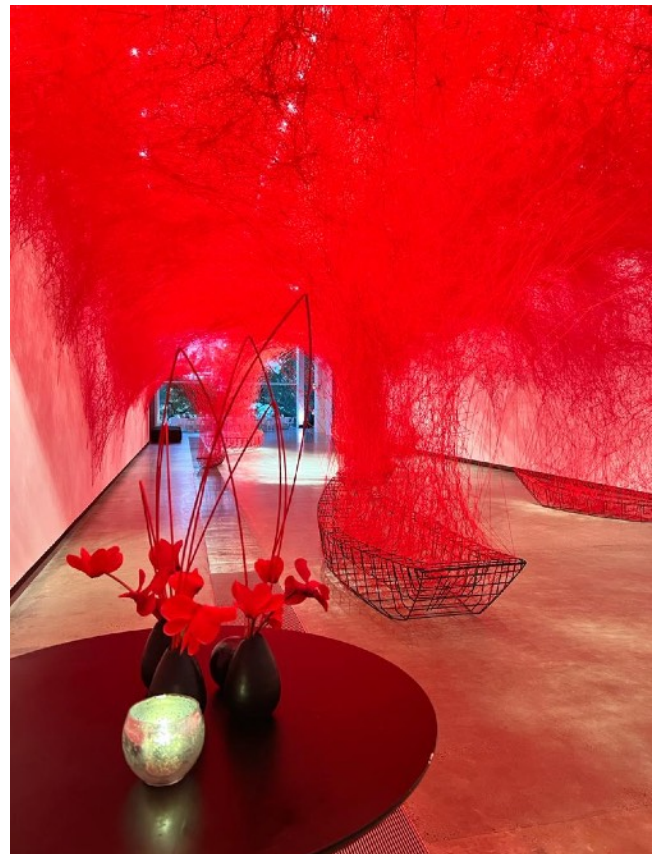
You know what they say about the best laid plans? Sue had carefully measured out our spacing and number of arrangements needed for the proposed 9 metre table and ordered what was required. We prepared a 3 metre sample at class and sent it off for approval – it looked spectacular by the way! Then Sue was told the dinner was now on four round tables. Ever flexible, we redesigned the arrangements to suit and all was well.

On Thursday 11 August at 4.30pm, Sue, Pat, Gillian Jones, Nicole Dorner-Scales and I met at the GOMA loading dock with everything we needed. Not even an hour later, the dining tables with white tablecloths and black napkins were transformed by our red and black arrangements. We also did three smaller arrangements for the bar tables and a welcome arrangement at reception.

When I visited this exhibition by Chiharu Shiota I was deeply moved. Imagine our pride in seeing our Ikebana positioned at both ends of a room holding one of her magnificent large-scale installations.



Ikebana for UAP-dinner at GOMA



Ikebana at Chiharu Shiota Exhibition GOMA

My first time exhibiting at the Annual Ikebana Exhibition by *Riana Holliday*

Having started Ikebana only a year and a bit ago, the thought of exhibiting at the annual exhibition was rather daunting. Irrespective of how much thought and planning that went into my arrangement, things happened that left my plan in tatters. A quick detour to the flower market ensued. I therefore took way too much material to cover every eventuality.

If it had not been for the support and help of the ikebana community and my teacher Amanda, this would have been more stressful and not such a good experience. I do look with new - and appreciative eyes - at all the arrangements on the plinths.

Sogetsu Ikebana Exhibition 2022 by *Greg Killoran* (our volunteer photographer)

It was a delight to take photos of all the arrangements displayed at the 2022 Sogetsu Ikebana Exhibition, "Gift of Nature".

I have taken the photos over several years and I am always amazed at the creativity in style and material used in the arrangements. **These materials are many and varied and are always used in ways that you wouldn't expect, which also showcases their particular beauty.**

The diversity of the arrangements are creations of each and every Ikebanist. These talented people design and create in their own individual way. The materials, containers and placements are integral in the consideration of the overall viewing experience.

The Exhibition gave an ambience of beauty and serenity which was enjoyed by many visitors. It is always an honour to be asked to photograph the exhibition.

Editor:

Beautiful photos of *each* individual arrangement, taken by our volunteer photographer, Greg Killoran can be viewed on our website ikebanabrisbane.org.au and click on "Gallery", then click on "Exhibition 2022".

Photos of people and elements that brought Annual Exhibition 2022 together



Emi, Catherine, Ingrid & Janet
constructing Free Flowing
Paradise



Ann, Sue, Nicole and Gillian (not
in photo) Constructing
Reflections of Nature



Serene exhibition



Audience at the opening of
Exhibition 2022



Amanda, Eri, Fay, Akemi &
Jordan (not in photo)
constructed A natural gift



Wendy, Ani, Belinda Lee, Daniele
and Sallyanne constructed
Connecting



Hands on ikebana class by
Julie enjoyed by all generations



Vernisher, Michelle Wong, Chris
& Masako transformed T-shirts
to a contemporary
arrangement titled Dynamic



A Demonstration of ikebana by
Sue & Gillian (not in photo),
David & Chieko



Tomomi demonstrating as
part of Group with
Vernisher, Ikuko & Michelle
Wong



Vernisher demonstated
ikebana as part of the Group
with Tomomi, Michelle and
Ikuko



Demonstination by Vernisher, Tomomi,
Michelle Wong & Ikuko formed a
beautiful linked group work



Masako organised the Trade Table with the help of Michelle Wong and a rotating team of ikebana members



Visitors enjoyed Guided Tours by Chieko or Chris or, in action here, Pat



Pat's cheerful arrangement at the Visitor Centre accompanied by our Exhibition Invitations

Sogetsu Ikebana at Japan Cultural Day

It was wonderful to have Japan Cultural Day fall on the Sunday of our Sogetsu Ikebana exhibition. Four members supported the many activities with Sogetsu ikebana arrangements alongside arrangements from the O'Hara and Ikenobo schools of ikebana. The Japanese Garden was alive with infectious excitement, laughs and smiles. Thank you and congratulations Chieko for organising this Sogetsu display to be a part of this day.



David Shield arrangement



Chis Wyr arrangement



Karin Rencken arrangement



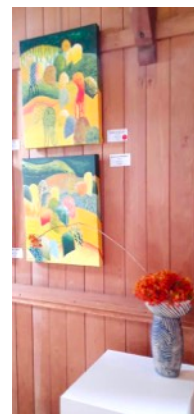
Chieko Klerkx arrangement



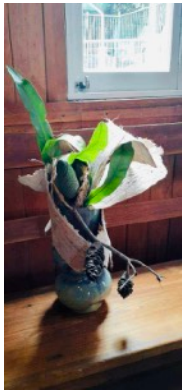
Arrangement by Julie Lumsdale complementing painting of Andrea Moser

Ikebana arrangements complementing paintings by local artist Andrea Moser at ArtBurst Arts and Crafts Exhibition *written by Wendy Hoskin*

Following the wonderful Annual Sogetsu Ikebana Exhibition some ikebana members chose to exhibit at the Kenmore Uniting Church's annual ArtBurst Arts and Crafts Fair. Their ikebana arrangements complemented artworks by local visual artist Andrea Moser.



Ikebana by Belinda Lee Snow complementing painting by Andrea Moser



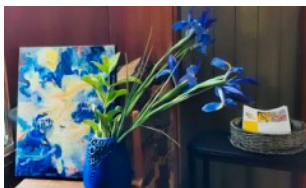
Belinda's arrangement
complementing Andrea
Moser's painting



Ikebana Installation titled
Reflections of Nature by Ann
Downey, Gillian Jones, Sue
Poole & Nicole Dorner-Scales



Wendy Hoskin's Ikebana
complementing paintings by
Andrea Moser



Painting by Andrea Moser
complemented by Wendy
Hoskin's Ikebana

Kenmore Uniting Church thanks the members
for their generous donations of both time
and talent.



Belinda Lee Snow
repurposed the Group
Installation "Connected"
to complement the
Andrea Moser's painting

VALE – MAVIS BEER



Mavis was a Townsville girl. She grew up with a keen interest in plants and flowers, such knowledge she gained from her mother.

She was an active member of the Townsville Floral Art Group and she even had her own Floristry business for many years.

The Floral Art Group invited Mildred Goldsmith from Maryborough to come to Townsville to demonstrate the art of Ikebana. **It was then that Mavis became inspired by this wonderful, exciting art form, and thus began her journey of Sogetsu Ikebana.**

Following her lessons with Mildred Goldsmith, (Mildred came to Townsville twice a year), Mavis qualified as a Sogetsu Ikebana teacher. In July, 1979, she began teaching. I was fortunate to be one of her very first students. Her other students included Rosalie Turk, Peggy Perkins, and Karen Green who continued their Ikebana journey in Brisbane; Rosalie and I as teachers, and Peggy and Karen as students.

Together with her husband Ron, her home at 23 Kelso Street, Aitkenvale became the epicentre for Sogetsu Ikebana in Townsville for many years. **Many students came to learn, some only staying a short time as they thought it was something you could "pick up" with a few lessons.** Others stayed for many years until ill-health caused her to cease teaching.

Mavis dedicated her time to teaching, encouraging and mentoring her students. She believed it was so important to know the “basics” or the “patterns”; so much so that every workshop commenced with a basic lesson.

Her garden was a typical Ikebana garden, with lots of depth, texture, colour and line, and was always available to any student who struggled with material for a lesson.

Because Townsville was so far away from other Ikebana classes, Mavis always encouraged students to take advantage of workshops led by such folk as Mildred Goldsmith, Mr. Norman Sparnon, Mr. Yoshira Umemura, Mr. Katayama, Mr. Okhi, Mary Jane Ramsden and others, when they came to Townsville.

She also encouraged students to attend workshops in Brisbane, Gold Coast, Tewantin, Sydney, Adelaide, Perth and Melbourne. Many Ikebana friendships have been formed by these opportunities.



Ah! Water lilies.
Greet the morning joyously.
So a new day dawns.

Mavis, an accomplished poet composed Haiku to accompany each arrangement at annual exhibitions.

Haiku poetry originated in Japan and consists of 3 lines of 17 syllables, and is a personal interpretation of the art form which is expressed.

Mavis and Mildred Goldsmith published a book “A Journey into the Art of Ikebana”, and each creation was accompanied by Haiku.



The pomegranate
Opens wide it's hungry jaws.

Mavis was the recipient of the 1996 Arts, Culture and Entertainment Award in Townsville for her contribution to the arts through Ikebana. Mavis held the rank of Jonin Somu.

In her later years Mavis began to lose her memory. She spent many years in care.

Those of us who were privileged to know Mavis as a teacher **give thanks for the many years of dedicated service Mavis gave to the world of Sogetsu Ikebana and seek to remember her as a bright, inspiring and encouraging mentor who left us with such a legacy.**

Rest in peace Mavis.

(SHIRLEY BEHAN 15/09/2022)

Love of ikebana + learning along the way...



Teacher Pat & Mikiko Inoue
Certificate 2 Sankyu



Teacher Pat & Daniele
Wilson
Certificate 1 Yonkyu



Amanda Terblanche, Teacher Pat
Mackie & Julie Lumsdale
both Teacher's Diploma Grade 3
Sankyu Shihan



Ikuko Okada & Teacher
Vernisher Wooh
Teacher's Diploma Grade 2
Sanyo

The Sogetsu Ikebana Qld Inc. Committee would like to applaud all the members for your lively participation and initiative. As we can see in this Newsletter, members are very active and various creative activities took place. Thank you too for each and every contribution to this Newsletter.

Member activities coming (full details follow by email)

* Workshop (Origami & ikebana)
Saturday 15 October 2022;

* Workshop (Calligraphy & ikebana)
Saturday 19 November 2022;

* Year End Social Function
in December 2022;

* 60 th Anniversary Celebration & Annual Exhibition
24, 26 & 27 August 2023