



**SOGETSU IKEBANA QUEENSLAND INC.**

[www.ikebanabrisbane.org.au](http://www.ikebanabrisbane.org.au)

Facebook: [ikebanabrisbane](https://www.facebook.com/ikebanabrisbane)

instagram: [sogetsu.ikebana.qld.inc](https://www.instagram.com/sogetsu.ikebana.qld.inc)

## Director's Message-September 2021

Chris Wyer

The season of Spring can offer us a release of energy, joy, warmth and give us that 'spring in our step'. Many of our members are experiencing just that. They are working at extending their skills and offering ikebana to the public in varied ways as you will read in this newsletter.

Vernisher is to be complimented on creating a stunning arrangement for the HOTA Gallery at the end of July with her inspiration being 'FLOW'. The arrangement had some time to be viewed before it became isolated in lockdown.

This has been another challenging time as we have moved through to the cancellation of our 2021 Exhibition, 'My Art of Sogetsu'. We had every hope that we would be able to open to the public however this was not to be. With the lifting of lockdown came the tightening of COVID-19 restrictions imposed in public spaces. These tight restrictions to space made it unviable for us to open. I thank everyone for their deep thinking and amazing efforts towards the preparation of trying to hold onto 'our exhibition'. After all this, we are fortunate now to present to you our Virtual Exhibition for 2021 in early October.

On a lighter side, we had two arrangements caught in lockdown, one each in Queensland Art Gallery and the HOTA Gallery. They presented beautifully in their isolation in the closed galleries!

I hope that you had an opportunity to enjoy the virtual tour of Akane Teshigahara's solo exhibition 'CONNECT'. It was exciting viewing her exhibition in 3D and seeing her flexibility in the use of space. An exhibition has the ability to provide a connection with nature, an uplifting of the spirits, a creative experience, cultural awareness, an



### Dates to Remember

#### **Virtual Exhibition**

Photos to Vernisher

24 September

#### **Inhouse Workshop**

Led by Gary Yong Gee

10:00-1:00 9 October

Bardon Hall

#### **Committee Meeting**

10:00-1:00 6 November

Perrin Park



opportunity to connect with community and so the list could go on. Akane in So no 269, August, referring to her Solo Exhibition CONNECT said, "I hoped that through ikebana, people could connect emotionally with each other and free their hearts." Exhibitions have the ability to do this.

The year still offers us ikebana opportunities through workshops, creating in public spaces and connecting with one another. Keep an eye out for the last two workshops for the year. See you there.

## Outdoor Arrangements: July Meeting

Ann Downey

The weather cleared to a beautiful winter's morning for our General Meeting on 24 July. As is our tradition, we held an informal workshop prior to the meeting. This year the theme was *Outside Ikebana*, using the space outside the meeting room at Perrin Park Toowong.

Pat Mackie, Catherine Purdon, Ikuko Okada, Sue Poole, Sallyanne Scott, Belinda-Lee Snow, Julie Lumsdale and Ann Downey

used the trees, outdoor furniture and gardens to bring the area to life with colourful arrangements/installations. And we were cheered on by an appreciative audience of other members.

All of this - the sunshine, the Ikebana, the conversations - led to a wonderful sense of enjoyment and camaraderie embodying the spirit of Sogetsu Ikebana Queensland.



Ikuko Okada



Pat Mackie



Belinda-Lee Snow



Ann Downey



Catherine Purdon



# ArtBurst Arts and Creative Fair @ Kenmore Uniting Church

## Wendy Hoskin

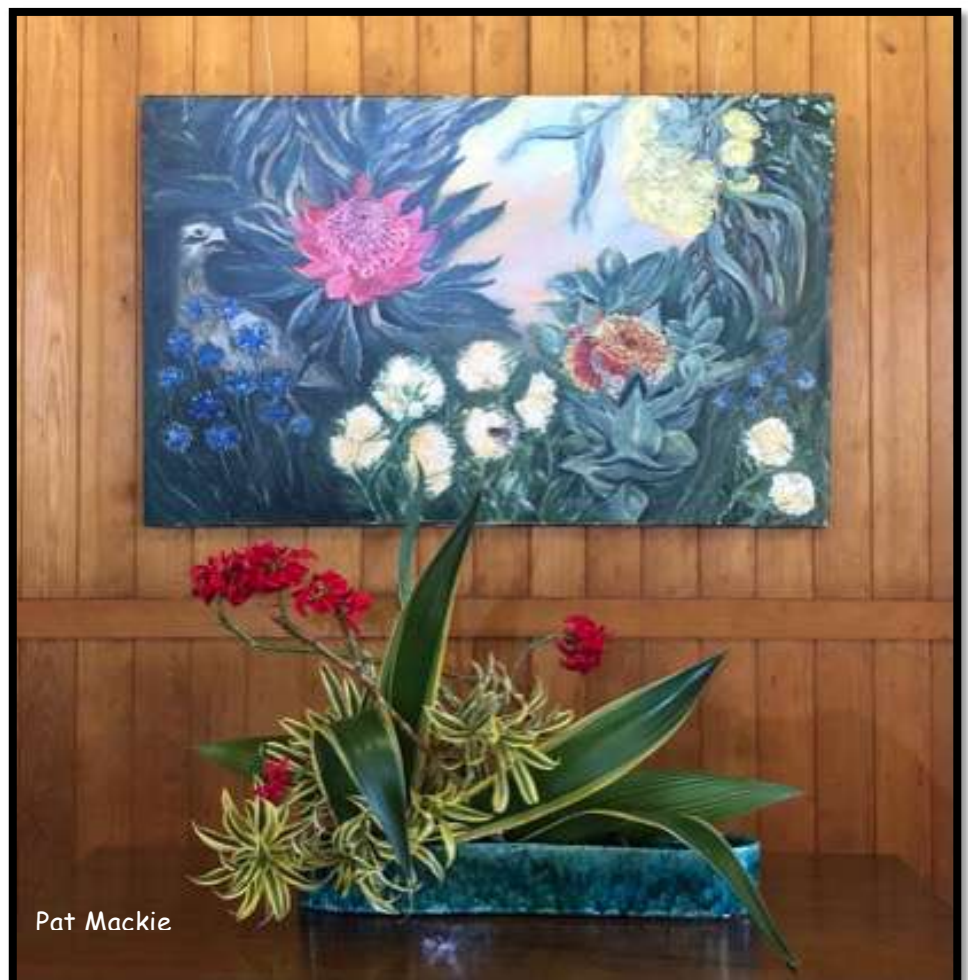
On Friday 3<sup>rd</sup> and Saturday 4<sup>th</sup> September, Kenmore Uniting Church held their annual Arts Fair in conjunction with the blessing of the InSpired Art Gallery, Creative and Meditative Space.

I was asked to provide ikebana to compliment some of the art works displayed in our inaugural exhibition. Rev Heather den Houting was invited to be the feature artist for the opening. Heather is an emerging Brisbane Artist who uses colour to create a transcendent and transformative space. She experiments with multi layers of colour until she finds the effect she wants.

Thanks to Sensei Pat for assisting me to present a display very worthy of the work. This was somewhat complicated by the fact that Heather was still working on some of the paintings!

The InSpired Gallery was certainly an inspiration for our work. We received so many positive comments on the arrangements. Following the artist talk on opening night, I spoke about Sogetsu Ikebana and how we related the arrangements to the artwork presented.

Thank you Pat for your wonderful contributions to the inaugural exhibition.



# My Ikebana: An Exhibition by Clare Loveband

Redland Museum 3<sup>rd</sup> September-29<sup>th</sup> October 2021



Masako Morrison



Vernisher Wooh



Chris Wyer

Opening night Friday 3<sup>rd</sup> September at the Redland Museum, Smith Street, Cleveland. What a fabulous night it was!

The essence of Ikebana was in the air! Sensei Vernisher Wooh, was Guest of Honour and opened the exhibition. In 2020, I began classes with Vernisher and after a few weeks it became a natural progression for me to want to paint my arrangements and those of other students.

My 15 paintings used watercolour paint and Faber Castell Polychromos pencils. The paintings were elegantly complimented by five arrangements by Vernisher, Chris Wyer, Masako Morrison, Ikuko Okado and Michelle Wong. These were placed on a plinth slightly to one side of five of the paintings to lead the eye into the painting.

Every two weeks Vernisher and her students will change these arrangements to allow more of her students the opportunity to exhibit. 'My Ikebana', will be open until 29<sup>th</sup> October, and the Museum is open daily from 10 a.m. until 4 p.m.

I am a member of the Botanical Artists' Society of Qld., and studied with Margaret Hastie at the Mt. Coot-tha Botanic Gardens. I followed this by studying with Gillian Rankin, a former illustrator at the Herbarium. In 2018, I completed a Natural History Illustration course at the University of Newcastle. I started with a Fine Arts Certificate in Glen Innes, N.S.W. years ago, before my family relocated to Brisbane.

I worked as a boutique florist at Paddington Flowers on Given Terrace, but I yearned to study ikebana, only using a few materials to create an arrangement.

I am now excited to be represented by the Martin Barry Gallery, Baroona Road, Milton Village, Milton.



The Exhibitions Director of Redland Museum, Rick Thomason, was impressed by the Sogetsu arrangements and asked Vernisher if she would run workshops.

Throughout my exhibition Vernisher is running two hour workshops from 10:00am-12:00pm, with tea, coffee and biscuits on 21<sup>st</sup> Sept (fully booked), 28<sup>th</sup> Sept and 12<sup>th</sup> Oct. The cost is \$27 and includes all materials and is limited to 10 people. She is also hosting a demonstration on the 24<sup>th</sup> September from 10:00am-12:00pm at a cost of \$12 including a Devonshire Tea.

You can also purchase greetings cards featuring my paintings at the Museum.



## Love of Ikebana + hard work = achievement

Congratulations to Vernisher's students, Michelle Wong on receiving 2nd Grade Sanyo Teacher Diploma and Esther Yu on receiving her 4th Grade Teacher Diploma

Congratulations also to Pat's students Emi Ito, who has achieved her third certificate and Jordan Azcune who achieved his second certificate.



## Farewell

Last month Pat's Tuesday class farewelled Yvette Bassett. Yvette and her husband have moved to Perth. Pat has put Yvette in touch with Ursula Pagels, Sogetsu Ikebana WA to allow her to continue her journey with Ikebana.

Fay Stutt, Eri Pitt, Amanda Terblanche, Yvette Bassett, Pat Mackie and Jordan Azcune.

